



**HAL**  
open science

## Comparison of simulation models in terms of quantity and allocation of land change

Maria Teresa Camacho Olmedo, Robert Gilmore Pontius, Martin Paegelow,  
Jean-François Mas

► **To cite this version:**

Maria Teresa Camacho Olmedo, Robert Gilmore Pontius, Martin Paegelow, Jean-François Mas. Comparison of simulation models in terms of quantity and allocation of land change. *Environmental Modelling and Software*, 2015, 69, pp.214-221. 10.1016/j.envsoft.2015.03.003 . hal-01453031

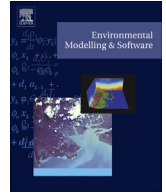
**HAL Id: hal-01453031**

**<https://univ-tlse2.hal.science/hal-01453031>**

Submitted on 2 Feb 2017

**HAL** is a multi-disciplinary open access archive for the deposit and dissemination of scientific research documents, whether they are published or not. The documents may come from teaching and research institutions in France or abroad, or from public or private research centers.

L'archive ouverte pluridisciplinaire **HAL**, est destinée au dépôt et à la diffusion de documents scientifiques de niveau recherche, publiés ou non, émanant des établissements d'enseignement et de recherche français ou étrangers, des laboratoires publics ou privés.



## Comparison of simulation models in terms of quantity and allocation of land change



María Teresa Camacho Olmedo <sup>a, \*</sup>, Robert Gilmore Pontius Jr <sup>b</sup>, Martin Paegelow <sup>c</sup>, Jean-François Mas <sup>d</sup>

<sup>a</sup> Dpto. de Análisis Geográfico Regional y Geografía Física, Universidad de Granada, Granada, Spain

<sup>b</sup> Graduate School of Geography, Clark University, Worcester, MA, United States

<sup>c</sup> GEODE UMR 5602 CNRS, Université de Toulouse Jean Jaurès, Toulouse, France

<sup>d</sup> Centro de Investigaciones en Geografía Ambiental, Universidad Nacional Autónoma de México (UNAM), Morelia, Mexico

### ARTICLE INFO

#### Article history:

Received 25 February 2014

Received in revised form

3 November 2014

Accepted 4 November 2014

Available online

#### Keywords:

Quantity and allocation

Assessment

Validation

Land Change Model

Land use and cover change (LUCC)

### ABSTRACT

Our article illustrates how to compare the outputs from models that simulate transitions among categories through time. We illustrate the concepts by comparing two land change models: Land Change Modeler and Cellular Automata Markov. We show how the modeling options influence the quantity and allocation of simulated transitions, and how to compare output maps from pairs of model runs with respect to a reference map of transitions during the validation interval. We recommend that the first step is to assess the quantity of each transition and to determine the cause of the variation in quantity among model runs. The second step is to assess the allocation of transitions and to determine the cause of the variation in allocation among model runs. The separation of quantity and allocation of the transitions is a helpful approach to communicate how models work and to describe pattern validation.

© 2015 Elsevier Ltd. All rights reserved.

## 1. Introduction

Land Change Models can be useful tools for environmental and geomatics research concerning land use and cover change (LUCC) (Paegelow et al., 2013). The simulation maps obtained from LUCC models help us to understand, forecast and anticipate the future evolution for a variety of applied environmental problems. One of the most important challenges is to clarify the validity of the outputs from the models.

A study area's rate and pattern of LUCC can influence a simulation's accuracy. If the real transitions among land categories constitute a small portion of the study area, then it can be difficult to predict the changes accurately, especially when the data have errors (Pontius et al., 2008; Pontius and Petrova, 2010). Furthermore, if the changes during the calibration interval are not stationary with the changes during the validation interval, then an extrapolation from the calibration interval to the validation interval will probably have systematic errors (Pontius and Neeti, 2010). Moreover, land changes involve complex processes that are shaped

by dynamic, non-linear human-nature interactions, which can be difficult for available variables and algorithms to capture (Pérez-Vega et al., 2012; Kolb et al., 2013).

The choice of the model is a subject of debate concerning the validation of models (Villa et al., 2007; Paegelow and Camacho Olmedo, 2008; Pontius et al., 2008; Fuller et al., 2011; Mas et al., 2011; Wang and Mountrakis, 2011; Sinha and Kumar, 2013). Some research attempts to test whether one model is more accurate than another model. However, a single model can create various outcomes depending on how the user chooses the model's parameters. If the choice of the parameters within a single model produces greater variation in accuracy than the choices among alternative models, then it makes little sense to report that one model is more accurate than another model (Pontius and Malanson, 2005). Model comparison can be challenging, because each model offers a variety of choices at each stage in a modeling application.

Our article concerns how to compare the outputs from models that simulate transitions among categories over time. We illustrate the concepts by comparing two models in the Selva version of the Idrisi software (Clark Labs 2006, 2010; Eastman, 2009). The models are Land Change Modeler (LCM) and Cellular Automata Markov (CA\_MARKOV). For a comparison between the two models and also

\* Corresponding author. Tel.: +34 958243639.

E-mail address: [camacho@ugr.es](mailto:camacho@ugr.es) (M.T. Camacho Olmedo).

with other models, see Paegelow and Camacho Olmedo (2008) and Mas et al. (2014). For applications of LCM, see Aguejidad and Houet (2008), Dang Khoi and Murayama (2010), Fuller et al. (2011) and Sangermano et al. (2012). For applications of CA\_MARKOV, see Paegelow and Camacho Olmedo (2005), Shirley and Battaglia (2008), Kamusoko et al. (2009), Mobaied et al. (2011), Behera et al. (2012), Memarian et al. (2012) and Nejadi et al. (2012). Our goals are to show: (1) how the modeling options influence the quantity and allocation of simulated changes, and (2) how to compare output maps from pairs of model runs with respect to a reference map of change during the validation interval.

## 2. Methods

### 2.1. Data

The study area is in Spain's Segura River Basin, which has undergone profound territorial and economic transformations in recent decades. The primary change by far has been the transition from rainfed crops to irrigated crops. This transition is driven by the development of water-related infrastructures and the increase in the water supply (Gómez and Grindlay, 2008; Gómez Espín et al., 2011). A secondary change has been urban growth, which is driven by the development of transportation and communication infrastructures.

Fig. 1 shows the specific study area, which consists of 2300 square kilometers in the Murcia province. The maps of land use and cover have four categories from the Corine Land Cover dataset: 1 Urban, industrial and transport uses; 2 Natural vegetation, unproductive land and water; 3 Irrigated crops; 4 Rainfed crops. The remainder of this article refers to these categories as: Urban, Natural, Irrigated, and Rainfed. Corine maps at 1990 and 2000 are used for model calibration. The calibrated model then simulates change from 2000 to 2006. The simulation output at 2006 and the Corine maps at 2000 and 2006 are used to validate the simulated changes.

Table 1 gives the Corine LUCC budget for the calibration and validation intervals (Pontius et al., 2004). The budget reflects the fact that the largest transition during both intervals is from Rainfed to Irrigated. Rainfed accounts for the vast majority of losses during both intervals. Irrigated accounts for the vast majority of gains during both intervals. Urban accounts for most of the remaining gains. Nearly all of the change is net change, as opposed to swap change.

### 2.2. Components of models

#### 2.2.1. Quantity of change

LCM and CA\_MARKOV use a Markov matrix to extrapolate the quantity of each simulated transition. The MARKOV module in the Idrisi software computes a Markov

matrix based on the maps at the two time points that define the calibration interval. The rows of the matrix show the host categories at the time point  $t_0$  and the columns show the claimant categories at the time point  $t_1$ . The Markov matrix records the proportion of each host category at time  $t_0$  that transitions to a claimant category at time  $t_1$ . Persistence of each category is shown in a diagonal entry of the matrix. Changes are in the off-diagonal entries of the matrix. The calibrated matrix is then used to extrapolate the quantity of each simulated transition beyond time  $t_1$ . If the duration of the calibration interval is equal to the duration of the validation interval, then the application of the Markov matrix is a straightforward application of matrix multiplication.

For our case study, the calibration interval is ten years from  $t_0 = 1990$  to  $t_1 = 2000$ , while the validation interval is six years from  $t_1 = 2000$  to  $t_2 = 2006$ . Table 2 shows how Idrisi accounts for this difference in durations. For each Markov entry, Idrisi interpolates a curve from  $t_1$  to  $t_1 + (t_1 - t_0)$ , which means in our case from 2000 to 2010. The interpolated curve allows Idrisi to compute the proportion at any year between  $t_1$  and  $t_1 + (t_1 - t_0)$ . For example, Table 2 shows that the proportion of Rainfed transition to Irrigated during 2000–2010 is 0.2525, which is set to be identical to the proportion during the decade of the calibration interval. The interpolated curve is then used to compute the proportion at any year between 2000 and 2010. For example, the proportion at the year 2006 is 0.1696. A more detailed description of the MARKOV module is in the Idrisi Selva Help System, Mas et al. (2011, 2014) and Sinha and Kumar (2013).

#### 2.2.2. Allocation of change

The Markov extrapolation specifies the target number of pixels for transition during the validation interval, then LCM and CA\_MARKOV allocate those transitions spatially within the study area. To accomplish the allocation, both models use maps that specify the priority for each pixel to experience gain of a particular claimant category.

LCM uses a transition potential map for each group of transitions in order to allocate the simulated transitions. Table 3 shows how we placed the transitions into four groups. For example, the first group is called urban gain, which contains three transitions to Urban. Table 3 shows seven transitions of the possible twelve transitions among four categories. We ignore five small transitions. Specifically, we assume that Urban never loses and that Irrigated never transitions to Natural or Rainfed. LCM uses a multi-layer perceptron (MLP) to create a transition potential map for each transition group (Eastman et al., 2005). The MLP reads maps of independent variables and maps of the transitions during the calibration interval to produce a map of transition potential for each group. Our independent variables are topographic variables, protected areas, distance to irrigation canals, and accessibility to roads and human settlements. CA\_MARKOV uses a suitability map for each claimant category in order to allocate the simulated transitions. We used multi-criteria evaluation (MCE) and the same independent variables to create one suitability map for each of the four categories (Eastman et al., 1995).

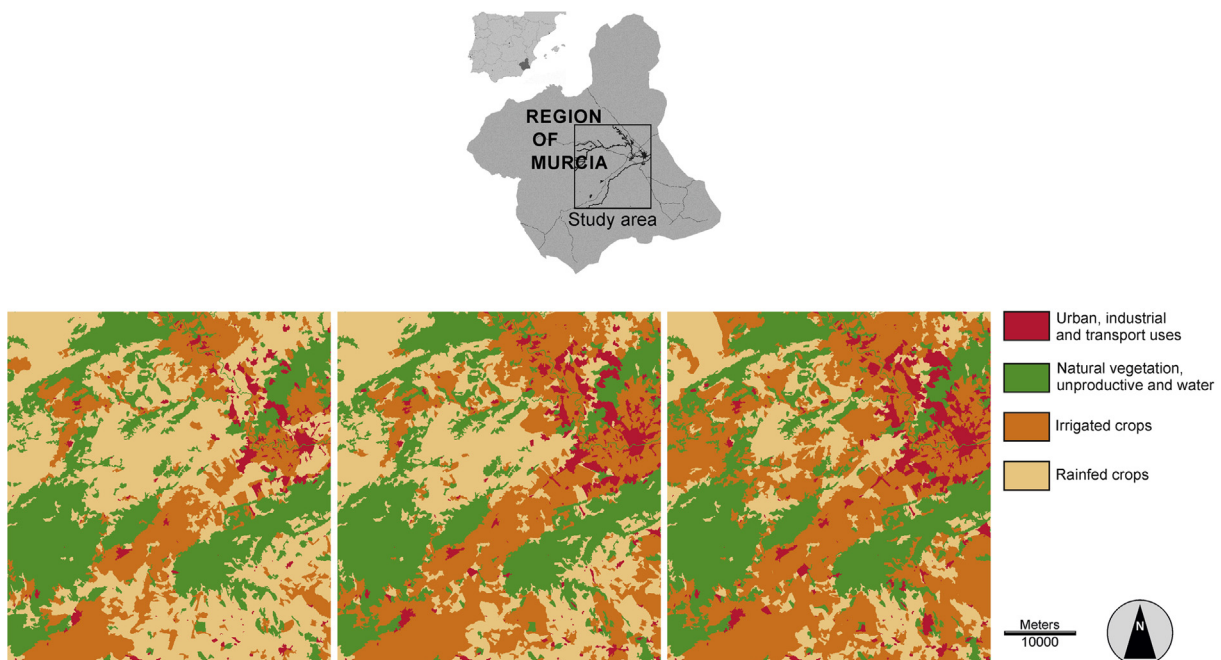


Fig. 1. Land categories at 1990 on left, at 2000 in middle and at 2006 on right in southern Spain. Source: Corine Land Cover.

**Table 1**  
Corine LUCC budget for the calibration interval 1990–2000 and the validation interval 2000–2006 expressed as percentage of spatial extent.

Category	Gains		Losses		Total changes		Swap		Net	
	1990–2000	2000–2006	1990–2000	2000–2006	1990–2000	2000–2006	1990–2000	2000–2006	1990–2000	2000–2006
Urban	2.01	1.32	0.02	0.00	2.03	1.32	0.04	0.00	1.99	1.32
Natural	0.30	0.39	1.01	0.68	1.31	1.07	0.61	0.78	0.70	0.29
Irrigated	11.67	11.47	1.35	0.80	13.02	12.27	2.70	1.60	10.32	10.67
Rainfed	0.99	0.25	12.59	11.95	13.58	12.20	1.98	0.50	11.60	11.70
Total	14.97	13.43	14.97	13.43	14.97	13.43	2.66	1.44	12.31	11.99

**Table 2**

Extrapolation of Markov entry for transition from Rainfed to Irrigated. Corine data indicate the proportion is 0.2525 during the decade of the calibration interval. Bold indicates the interpolation years. Italics indicate the year to be used for the simulation during the six-year validation interval.

Year	Rainfed to Irrigated
<b>2000</b>	<b>0.0000</b>
2001	0.0529
2002	0.0774
2003	0.1013
2004	0.1247
2005	0.1475
2006	0.1696
2007	0.1912
2008	0.2122
2009	0.2326
<b>2010</b>	<b>0.2525</b>

**Table 3**

Equivalence between LCM's transition groups in rows and CA\_MARKOV's suitability maps in columns. Horizontal lines separate the four sub-models in LCM.

Transitions	Urban	Natural	Irrigated	Rainfed
Natural to Urban	urban gain			
Irrigated to Urban				
Rainfed to Urban				
Rainfed to Natural		natural gain		
Natural to Irrigated			irrigation gain	
Rainfed to Irrigated				
Natural to Rainfed				rainfed gain

Some pixels have the possibility to transition to more than one claimant category. For example, a pixel of Natural can transition to any of the other three categories during the simulation. Idrisi's Multi-Objective Land Allocation (MOLA) algorithm selects the single claimant category for each pixel. MOLA determines the claimant category based on a minimum-distance-to-ideal-point rule and weighted ranks (Eastman et al., 1995; Mas et al., 2014).

CA\_MARKOV uses temporal iterations, which the user must specify. We chose six iterations because six is the number of years during the simulation interval. MOLA runs once per iteration for CA\_MARKOV. Therefore, MOLA ran six times for our application of CA\_MARKOV.

CA\_MARKOV allows for options concerning how to use its spatial filter. We ran CA\_MARKOV in two ways with respect to the filter. The first run includes a spatial filter and the second run does not. We call the run with the filter "CA\_MARKOV", and the run without the filter "CA\_MARKOV without filter". Specifically, the first run of CA\_MARKOV uses a 5 × 5 spatial filter, with rows (00100; 01110; 11111; 01110; 00100). The consequence of the filter is that the simulated gain of a claimant category tends to be near where the claimant category already exists. The second run of CA\_MARKOV does not have the effect of a spatial filter, meaning the filter has rows (000; 010; 000). The consequence is that CA\_MARKOV without filter does not consider spatial proximity to an existing category when simulating the gain of that category.

### 2.3. Validation via map overlay

We perform pattern validation using map overlays. The overlays produce maps that show three types of information.

First, we overlay the map of Irrigated at 2000 with the Corine and simulated maps of Irrigated at 2006. These overlays show the spatial relationship between Irrigated at 2000 and the gain of Irrigated during 2000–2006.

Second, we overlay the Corine map of 2000, the Corine map of 2006, and a simulation map of 2006. This produces four types of pixels: misses, hits, false alarms and correct rejections. Miss means the Corine maps show change but the simulation shows persistence. Hit means the Corine maps show change and the simulation shows change. False alarm means the Corine maps show persistence but the simulation shows change. Correct rejection means the Corine maps show persistence and the simulation shows persistence.

Third, we compare the change shown by the Corine maps to the change simulated by pairs of models. We overlay three maps that show change versus non-change during the validation interval. The three maps are from: the Corine data, the simulation from model 1 and the simulation from model 2. Three maps of change versus non-change lead to eight possible combinations for each pixel. These eight possible combinations are expressed as two sets of maps. The first set shows four combinations for the Corine persistence areas. The second set shows four combinations for the Corine change areas. The definitions for the legend in the Corine persistence areas are as follows. DOUBLE CORRECT REJECTION means both models simulated persistence. FALSE ALARMS/CORRECT REJECTION means the first model simulated change and the second model simulated persistence. CORRECT REJECTION/FALSE ALARMS means the first model simulated persistence and the second model simulated change. DOUBLE FALSE ALARMS means both models simulated change. The definitions for the legend in the Corine change areas are as follows. DOUBLE HITS means both models simulated change. MISSES/HITS means the first model simulated persistence and the second model simulated change. HITS/MISSES means the first model simulated change and the second model simulated persistence. DOUBLE MISSES means both models simulated persistence.

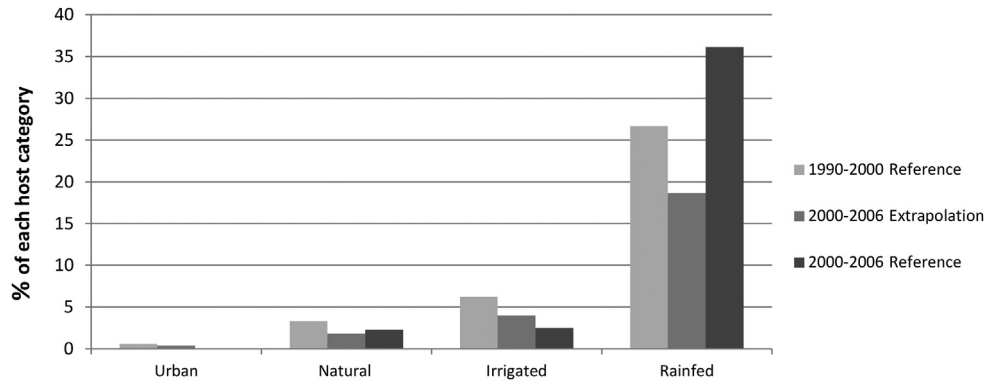
## 3. Results

### 3.1. Quantity of change

Fig. 2 shows the percent loss of each host category according to the reference Corine data during the calibration and validation intervals and according to the Markov extrapolation during validation interval. The calibration interval has more years than the validation interval. Therefore, the reference losses during the calibration interval are greater than the extrapolation losses during the validation interval. Reference losses from Natural and Rainfed during the validation interval are greater than the corresponding extrapolated losses, which indicates that losses from Natural and Rainfed accelerated from the calibration interval to the validation interval. Meanwhile losses from Urban and Irrigated apparently decelerated from the calibration interval to the validation interval.

The output maps from LCM and CA\_MARKOV have various amounts of change, in spite of the fact that both LCM and CA\_MARKOV use a Markov matrix to extrapolate the number of pixels for each transition. One reason for the discrepancies is that the user can choose to ignore some transitions by setting those transitions to zero in the Markov matrix. Table 4 shows how a Markov matrix that includes all transitions extrapolates more change than a Markov matrix that has only seven transitions. Table 4 also shows that the output map from LCM matches the quantity of change from the Markov extrapolation with seven transitions. However, the output maps from both CA\_MARKOV runs show less change than from the Markov extrapolations.

Table 5 reveals the details of the changes by showing the quantity of each transition for various matrices. The Markov



**Fig. 2.** Reference losses during 1990–2000 and 2000–2006, and extrapolated losses during 2000–2006 in percentage of each host category at the initial time point of the respective time interval.

**Table 4**

Hectares of change extrapolated by a Markov matrix during 2000–2006 and shown in the output maps.

Source	Change
Markov matrix with all transitions	18146
Markov matrix with seven transitions	16200
Output from LCM	16200
Output from CA_MARKOV	14405
Output from CA_MARKOV without filter	14588

**Table 5**

Matrix of hectares from 2000 in rows to 2006 in columns by the Markov extrapolation, the output maps, and the Corine data. Bold indicates persistence. Underlined entries are the seven transitions that are simulated by LCM.

	Urban	Natural	Irrigated	Rainfed
Markov extrapolation				
Urban	<b>11,732</b>	32	11	0
Natural	<u>531</u>	<b>65,957</b>	<u>445</u>	<u>230</u>
Irrigated	<u>1,006</u>	131	<b>70,002</b>	1,772
Rainfed	<u>1,111</u>	<u>150</u>	<u>12,727</u>	<b>61,052</b>
Total at 2006	14,380	66,270	83,185	63,054
LCM				
Urban	<b>11,775</b>	0	0	0
Natural	<u>531</u>	<b>65,957</b>	<u>445</u>	<u>230</u>
Irrigated	<u>1,006</u>	0	<b>71,905</b>	0
Rainfed	<u>1,111</u>	<u>150</u>	<u>12,727</u>	<b>61,052</b>
Total at 2006	14,423	66,107	85,077	61,282
CA_MARKOV				
Urban	<b>11,774</b>	0	0	1
Natural	<u>523</u>	<b>66,095</b>	<u>396</u>	<u>149</u>
Irrigated	<u>977</u>	18	<b>71,915</b>	1
Rainfed	<u>1,127</u>	39	<u>11,174</u>	<b>62,700</b>
Total at 2006	14,401	66,152	83,485	62,851
CA_MARKOV without filter				
Urban	<b>11,771</b>	0	0	4
Natural	<u>533</u>	<b>66,043</b>	<u>400</u>	<u>187</u>
Irrigated	<u>992</u>	19	<b>71,863</b>	<u>37</u>
Rainfed	<u>1,105</u>	<u>90</u>	<u>11,222</u>	<b>62,623</b>
Total at 2006	14,401	66,152	83,485	62,851
Corine				
Urban	<b>11,775</b>	0	0	0
Natural	<u>574</u>	<b>65,628</b>	<u>401</u>	<u>560</u>
Irrigated	<u>1,488</u>	320	<b>71,103</b>	0
Rainfed	<u>925</u>	<u>566</u>	<u>25,626</u>	<b>47,923</b>
Total at 2006	14,762	66,514	97,130	48,483

extrapolation for the seven modeled transitions matches the output from LCM, but the outputs from the CA\_MARKOV runs do not. Both CA\_MARKOV runs produce maps that have identical areas by category at 2006, and both CA\_MARKOV runs show positive values for ten transitions. However, the sizes of the transitions differ between CA\_MARKOV and CA\_MARKOV without filter.

### 3.2. Allocation of change

Fig. 3 shows the spatial relationship between the Irrigated at 2000 and the gain of Irrigated during 2000–2006. The Corine data show that the gain of Irrigated occurs mostly in large patches, especially in the northwest. The CA\_MARKOV output shows how the spatial filter causes the simulated gain of Irrigated to occur adjacent to the Irrigated at 2000. CA\_MARKOV without filter and LCM have the ability to simulate the gain of Irrigated far from the Irrigated at 2000.

Fig. 4 shows the misses, hits, false alarms and correct rejections for the three simulations. The union of misses and hits is the change according to the Corine data during 2000–2006, which constitutes 13% of the spatial extent. The union of hits and false alarms is the simulated change, which is smaller than the Corine change for all three simulations. The Figure of Merit is a measure that examines how the simulated change overlaps with the reference change, where 0% means no overlap and 100% means perfect overlap. Specifically, the Figure of Merit is the ratio of hits to the sum of misses, hits and false alarms (Pontius et al., 2008). The Figure of Merit is 10.4% for LCM, 10.5% for CA\_MARKOV, and 10.2% for CA\_MARKOV without filter.

Fig. 5 presents overlays of the three simulation pairs: LCM versus CA\_MARKOV, LCM versus CA\_MARKOV without filter, and CA\_MARKOV versus CA\_MARKOV without filter. Fig. 5a shows the results for the Corine persistence areas during 2000–2006, where a pixel of simulated persistence is a correct rejection and a pixel of simulated change is a false alarm. Fig. 5b shows the results for the Corine change areas during 2000–2006, where a pixel of simulated change is a hit and a pixel of simulated persistence is a miss. Fig. 5 includes one bar for each map to clarify the relative percent of each of the four combinations within each map.

The bars in Fig. 5a show that LCM versus CA\_MARKOV without filter has the largest double correct rejections and double false alarms. This implies that LCM and CA\_MARKOV without filter form the pair that is most similar to each other, in the region where the Corine data show persistence. The bars in Fig. 5b show that LCM versus CA\_MARKOV without filter has the largest double hits and misses. This implies that LCM and CA\_MARKOV without filter form

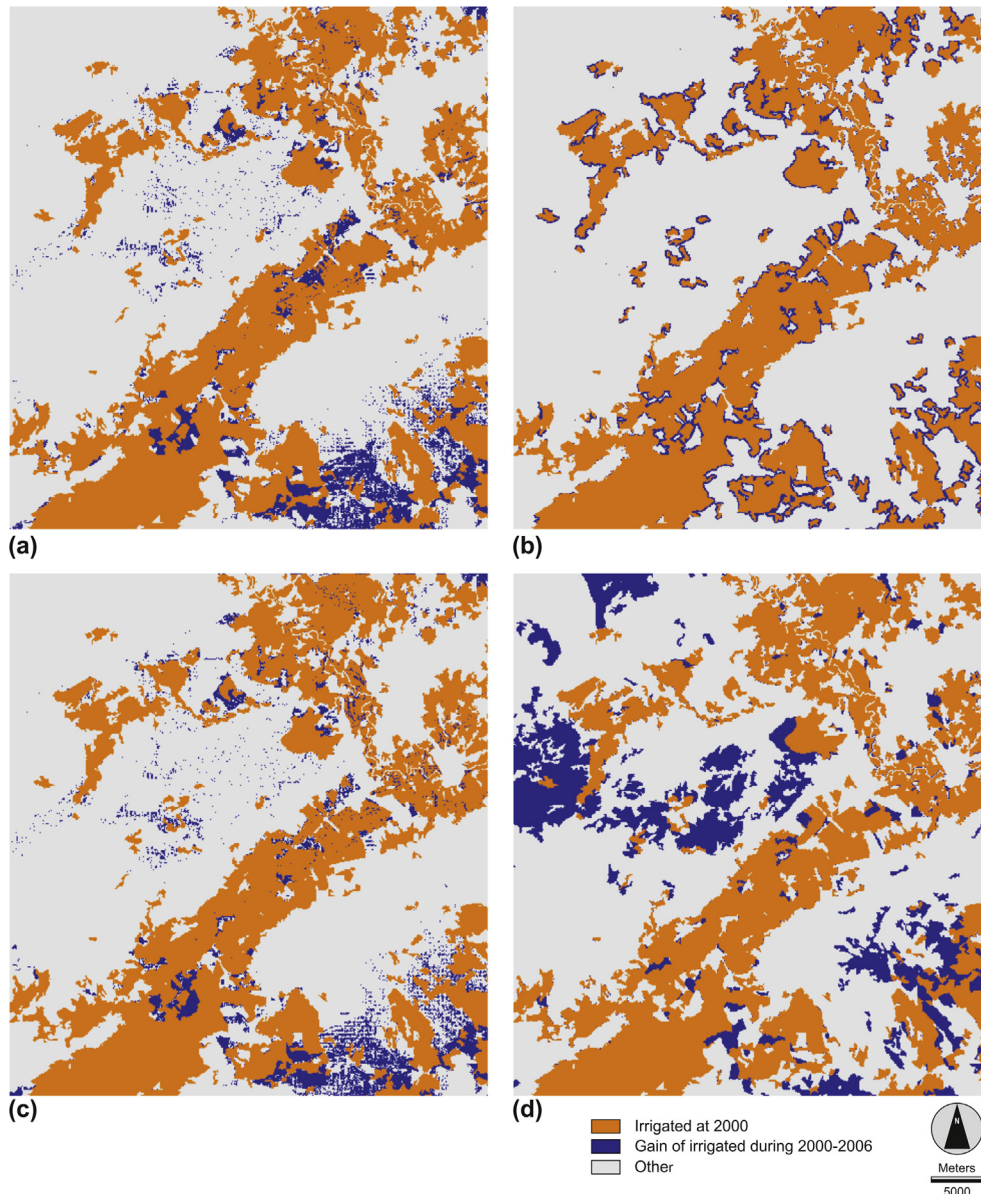


Fig. 3. Each map shows Irrigated at 2000, Gain of Irrigated during 2000–2006, and Other for (a) LCM, (b) CA\_MARKOV, (c) CA\_MARKOV without filter, and (d) Corine.

the pair that is most similar to each other, in the region where the Corine data show change.

The percent error at 2006 of the three model runs are all within two percentage points of each other, for both the Corine persistence areas and the Corine change areas. Consequently, if the Corine maps have more than two percentage points of error, then the models are indistinguishable in terms of predictive accuracy.

## 4. Discussion

### 4.1. Quantity of change

LCM and CA\_MARKOV both use a Markov matrix to extrapolate the quantity of each transition and persistence. The Markov method of extrapolation is used also in other land change models, such as DINAMICA (Soares-Filho et al., 2002). The fact that the Markov matrix is integrated into various models has led to its generalized use within the community of land change modelers.

However, the Markov matrix can experience conceptual problems when the calibration interval and the extrapolation interval have different durations. It would be convenient to compute a Markov matrix that extrapolates over an annual time step, regardless of the number of years of the calibration interval. However, Takada et al. (2010) showed that attempts to compute an annual Markov matrix can give multiple solutions or no solutions that have entries between 0 and 1. Flamenco-Sandoval et al. (2007) experienced one of these difficulties when trying to compute annual transition matrices, finding that negative transition proportions can appear in the annualized matrix. Idrisi software uses interpolation for the entries in the Markov matrix in order to compute a Markov entry between 0 and 1 for the desired extrapolation year (Clark Labs, 2006, 2010; Eastman, 2009).

All three simulations in our case study show less change than the reference change during the validation interval. One reason is that we chose to simulate only seven of the twelve possible transitions among the four categories. A second reason is that the two

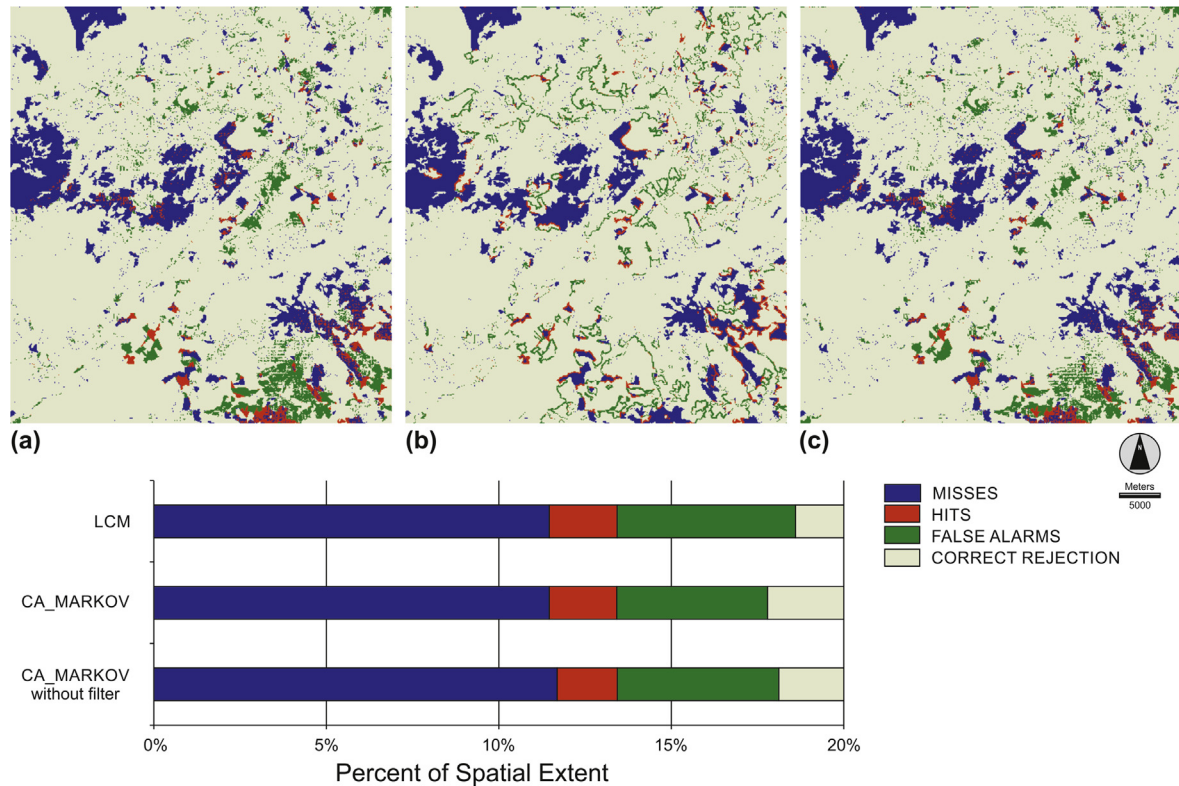


Fig. 4. Misses, hits, false alarms, and correct rejections for (a) LCM, (b) CA\_MARKOV, and (c) CA\_MARKOV without filter.

CA\_MARKOV output maps show less change than the amount of change extrapolated by the Markov matrix with seven transitions. However, the most obvious reason is the non-stationarity of the amount of change between the calibration interval and the validation interval. For our case study, the Corine data show acceleration of change from the calibration interval to the validation interval. This is most evident for the transition from Rainfed crops to Irrigated (Table 5).

#### 4.2. Allocation of change

The use of the spatial filter in CA\_MARKOV produces a spatial expansion effect around existing patches (Fig. 3). Explicit spatial expansion is not part of LCM and CA\_MARKOV without filter, both of which simulate new patches of Irrigated that are not necessarily adjacent to the Irrigated at 2000. This is a reason why the output maps from LCM and CA\_MARKOV without filter are more similar to each other than from either of the other two pairs of output maps.

Camacho Olmedo et al. (2013) verified that LCM simulates change at the highest ranking pixels in the transition potential maps. When CA\_MARKOV uses a spatial filter, the simulation does not necessarily select the highest ranking pixels from the original suitability maps, because the spatial filter modifies the original suitability maps.

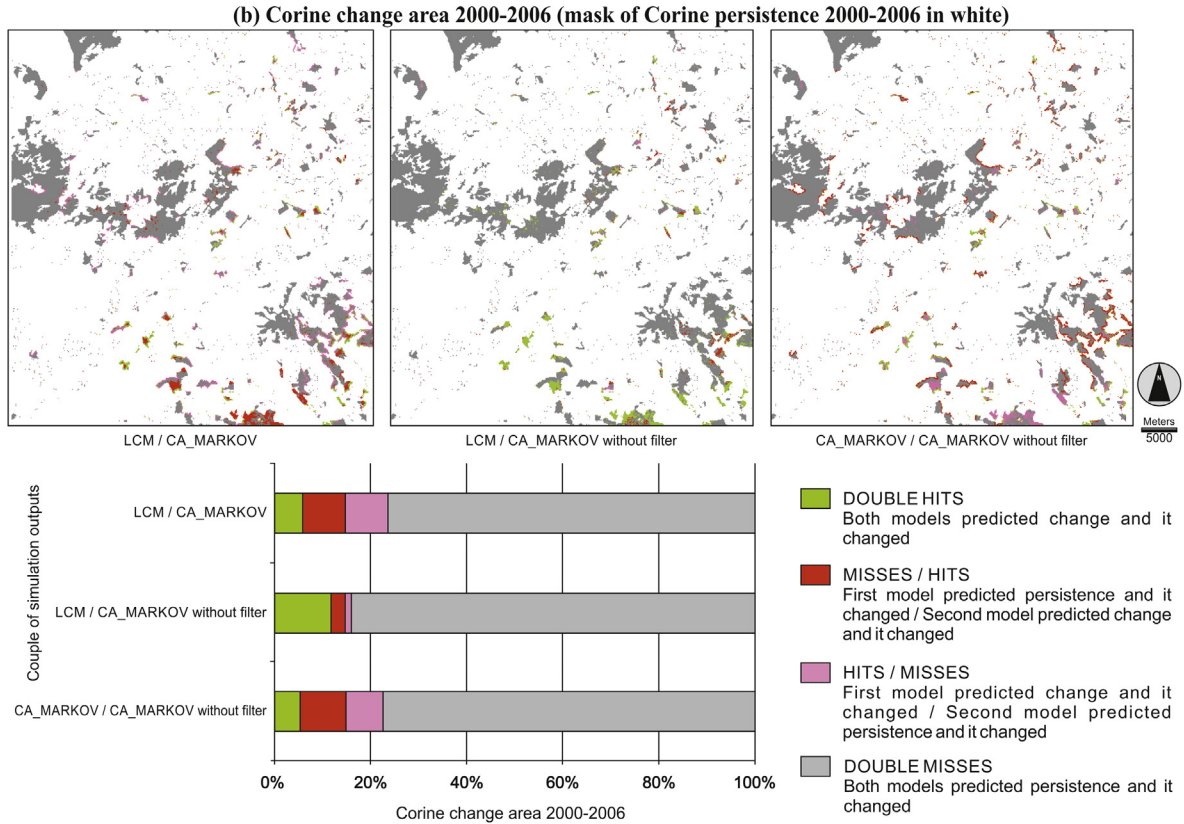
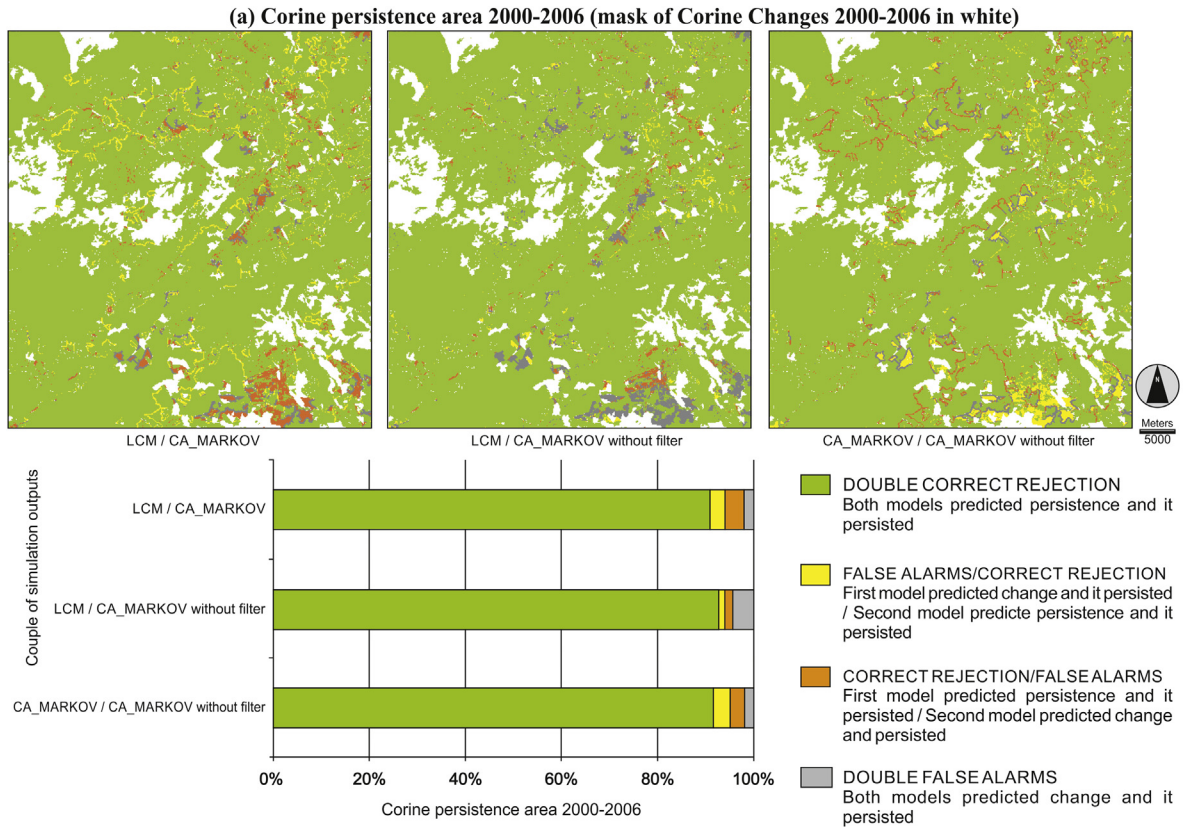
Mas et al. (2011, 2014) showed that LCM and DINAMICA tend to simulate new patches when the explanatory variables produce disjoint patches that have high transition potential. Neural networks use non-linear functions and consider interactions among variables. These machine-learning approaches allow the model to consider the fact that a single variable might have various influences across the study area (Mas et al., 2004; Aguejidad and Houet, 2008).

Other methods have been proposed for pattern validation, such as landscape metrics (Mas et al., 2010; Aguilera et al., 2011). Viana and Aranha (2010) applied LCM for the modeling and evaluation of landscape spatial patterns. CA\_MARKOV has been used to analyze spatial patterns for many applications, such as to analyze: land use patterns in towns and villages (Sang et al., 2011), neighborhood effects on urbanization (Tong et al., 2012), urban growth (Mitsova et al., 2011), variation among forest management areas (Peterson et al., 2009), and the impacts of land use (XianBin et al., 2009).

Another way to focus on validation of spatial allocation is to force the simulation output to match the reference quantity of change during the validation interval. An example of simulation using reference quantities of changes has already been applied to retrospective simulation (Camacho Olmedo et al., 2008). This can be important because pattern metrics can be sensitive to the quantity of each category (Brown et al., 2013).

## 5. Conclusions

We recommend that the first step to validate the output of a land change model is to assess the quantity of each transition, meaning the sizes of areas of the temporal changes. Users must understand the reference transitions during the calibration and validation intervals. Then users must understand how the method for extrapolation of the quantity of each transition works. In our case study, the reference change during the calibration interval accelerated during the validation interval. Therefore, the extrapolation showed less than the reference change during validation interval. Our recommended second step to validate the outputs among land change models is to assess the variation in the allocation of changes and to determine the cause of the variation. In our case study, the  $5 \times 5$  spatial filter made the output map from CA\_MARKOV fundamentally different than the other two modeling



**Fig. 5.** Pattern validation during 2000–2006 by overlaying pairs of simulation outputs: LCM versus CA\_MARKOV, LCM versus CA\_MARKOV without filter, and CA\_MARKOV versus CA\_MARKOV without filter. (a) Corine persistence area. (b) Corine change area.



approaches. The  $5 \times 5$  spatial filter causes the gain of a category to occur near where the category already existed. The other two models did not have this characteristic. The assessment of quantity and allocation of change is a helpful framework to learn how models work, and to communicate pattern validation.

## Acknowledgments

The authors are grateful to the Spanish MINECO and FEDER for supporting this work through the following project: *Simulaciones geomáticas para modelizar dinámicas ambientales II. Horizonte 2020*. 2014–2017. BIA2013–43462–P. We are also grateful to Proyecto Fondos SEP-CONACyT 178816.

## References

- Ageud, R., Houet, T., 2008. Modélisation de l'étalement urbain d'une métropole française (Rennes) à l'aide du modèle land change: scénarios d'évolutions futures. In: Symposium Spatial Landscape Modelling: from Dynamic Approaches to Functional Evaluations, Toulouse, 3–5 June, 2008, p. 12.
- Aguilera, F., Valenzuela, L.M., Botequilha, A., 2011. Landscape metrics in the analysis of urban land use patterns: a case study in a Spanish metropolitan area. *Landsc. Urban Plan.* 99, 226–238.
- Behera, M.D., Borate, S.N., Panda, S.N., Behera, P.R., Roy, P.S., 2012. Modelling and analyzing the watershed dynamics using Cellular Automata (CA)-Markov model – a geo-information based approach. *J. Earth Syst. Sci.* 121 (4), 1011–1024.
- Brown, Daniel G., Band, Lawrence E., Green, Kathleen O., Irwin, Elena G., Jain, Atul, Lambin, Eric F., Pontius Jr., Robert G., Seto, Karen C., Turner II, B.L., Verburg, Peter H., 2013. Advancing Land Change Modeling: Opportunities and Research Requirements. The National Academies Press, Washington DC, 145 pp. [http://www.nap.edu/catalog.php?record\\_id=18385](http://www.nap.edu/catalog.php?record_id=18385).
- Camacho Olmedo, M.T., Paegelow, M., García Martínez, P., 2008. Retrospective geomatic landscape modeling. A probabilistic approach. In: Paegelow, M., Camacho Olmedo, M.T. (Eds.), *Modelling Environmental Dynamics. Advances in Geomatic Simulations, Series Environmental Science*. Springer Verlag, Heidelberg, pp. 247–268.
- Camacho Olmedo, M.T., Paegelow, M., Mas, J.F., 2013. Interest in intermediate soft-classified maps in land change model validation: suitability versus transition potential. *Int. J. Geogr. Inf. Sci.* 27 (12), 2343–2361.
- Clark Labs, 2006, 2010. Available from: <http://www.clarklabs.org/>.
- Dang Khoi, D., Murayama, Y., 2010. Forecasting areas vulnerable to forest conversion in the Tam Dao National Park region, Vietnam. *Remote Sens.* 2 (5), 1249–1272.
- Eastman, J.R., 2009. Idrisi Taiga, Guide to GIS and Image Processing, Manual Version 16.02. Clark University, 342 pp.
- Eastman, J.R., Jin, W., Kyem, P.A.K., Toledano, J., 1995. Raster procedures for multi-criteria/multi-objective decisions. *Photogramm. Eng. Remote Sens.* 61 (5), 539–547.
- Eastman, J.R., Van Fossen, M.E., Solarzano, L.A., 2005. In: GIS, Analysis, Spatial, Modeling, D., Maguire, M., Goodchild, M., Batty, M. (Eds.), *Transition Potential Modeling for Land Cover Change*. ESRI Press, Redlands, California, pp. 357–386.
- Flamenco-Sandoval, A., Martínez Ramos, M., Masera, O.R., 2007. Assessing implications of land-use and land-cover change dynamics for conservation of a highly diverse tropical rain forest. *Biol. Conserv.* 138, 131–145.
- Fuller, D.O., Hardiono, M., Meijaard, E., 2011. Deforestation projections for carbon-rich peat swamp forests of central Kalimantan, Indonesia. *Environ. Manag.* 48 (3), 436–447.
- Gómez Espín, J.M., López Fernández, J.A., Montaner Salas, M.E. (Eds.), 2011. *Modernización de regadíos: Sostenibilidad social y económica. La singularidad de los regadíos del Trasvase Tajo-Segura*. Colección Usos del agua en el territorio. Universidad de Murcia, Spain.
- Gómez, J.L., Grindlay, A. (Eds.), 2008. *Agua, Ingeniería y Territorio: La transformación de la cuenca del río Segura por la Ingeniería Hidráulica*. Ministerio de Medio Ambiente, Medio Rural y Marino. Confederación Hidrográfica del Segura.
- Kamusoko, C., Aniya, M., Adi, B., Manjoro, M., 2009. Rural sustainability under threat in Zimbabwe - simulation of future land use/cover changes in the Bindura district based on the Markov-cellular automata model. *Appl. Geogr.* 29, 435–447.
- Kolb, M., Mas, J.F., Galicia, L., 2013. Evaluating drivers of land-use change and transition potential models in a complex landscape in Southern Mexico. *Int. J. Geogr. Inf. Sci.* 27 (9), 1804–1827.
- Mas, J.F., Puig, H., Palacio, J.L., Sosa-López, A., 2004. Modelling deforestation using GIS and artificial neural networks. *Environ. Model. Softw.* 19 (5), 461–471.
- Mas, J.F., Pérez Vega, A., Clarke, K., 2010. Assessing Simulated Land Use/Cover Maps Using Similarity and Fragmentation Indices. In: ASPRS Annual Conference, April 26–30, San Diego, CA (CD).
- Mas, J.F., Kolb, M., Houet, T., Paegelow, M., Camacho Olmedo, M.T., 2011. Eclairer le choix des outils de simulation des changements des modes d'occupation et d'usages des sols. Une approche comparative. *Rev. Int. Géomat.* 3, 405–430.
- Mas, J.F., Kolb, M., Paegelow, M., Camacho Olmedo, M.T., Houet, T., 2014. Inductive pattern-based land use/cover change models: a comparison of four software packages. In: *Environ. Model. Softw.*, 51, Elsevier, pp. 94–111.
- Memarian, H., Kumar Balasundram, S., Bin Talib, J., Teh Boon Sung, C., Mohd Sood, A., Abbaspour, K., 2012. Validation of CA-Markov for simulation of land use and cover change in the Langat Basin, Malaysia. *J. Geogr. Inf. Syst.* 4 (6), 542–554.
- Mitsova, D., Shuster, W., Wang, X., 2011. A cellular automata model of landcover change to integrate urban growth with open space conservation. *Landsc. Urban Plan.* 99, 141–153.
- Mobaied, S., Riera, B., Lalanne, A., Baguette, M., Machon, N., 2011. The use of diachronic spatial approaches and predictive modelling to study the vegetation dynamics of a managed heathland. *Biodivers. Conserv.* 20, 73–88.
- Nejadi, A., Jafari, H.R., Makhdoom, M.F., et al., 2012. Modeling plausible impacts of land use change on wildlife habitats, application and validation: Lisar protected area, Iran. *Int. J. Environ. Res.* 6 (4), 883–892.
- Paegelow, M., Camacho Olmedo, M.T., 2005. Possibilities and limits of prospective GIS land cover modeling – a compared case study: Garrotxes (France) and Alta Alpujarra Granadina (Spain). *Int. J. Geogr. Inf. Sci.* 19 (6), 697–722.
- Paegelow, M., Camacho Olmedo, M.T. (Eds.), 2008. *Modelling environmental dynamics. Advances in Geomatic Simulations. Series Environmental Science*. Springer Verlag, Berlin, Heidelberg, New York.
- Paegelow, M., Camacho Olmedo, M.T., Mas, J.F., Houet, T., Pontius Jr., R.G., 2013. *Land Change Modelling: Moving Beyond Projections*. In: *Int. J. Geogr. Inf. Sci.*, vol. 27 (9). Taylor & Francis, pp. 1691–1695.
- Pérez-Vega, A., Mas, J.F., Ligmann-Zielinska, A., 2012. Comparing two approaches to land use/cover change modeling and their implications for the assessment of biodiversity loss in a deciduous tropical forest. *Environ. Model. Softw.* 29 (1), 11–23.
- Peterson, L.K., Bergen, K.M., Brown, D.G., et al., 2009. Forested land-cover patterns and trends over changing forest management areas in the Siberian Baikal region. *For. Ecol. Manag.* 257 (3), 911–922.
- Pontius Jr., R.G., Malanson, J., 2005. Comparison of the structure and accuracy of two land change models. *Int. J. Geogr. Inf. Sci.* 19 (2), 243–265.
- Pontius Jr., R.G., Neeti, N., 2010. Uncertainty in the difference between maps of future land change scenarios. *Sustain. Sci.* 5 (1), 39–50.
- Pontius Jr., R.G., Petrova, S.H., 2010. Assessing a predictive model on land change using uncertain data. *Environ. Model. Softw.* 25 (3), 299–309.
- Pontius Jr., R.G., Shusas, E., McEachern, M., 2004. Detecting important categorical land changes while accounting for persistence. *Agric. Ecosyst. Environ.* 101 (2–3), 251–268.
- Pontius Jr., R.G., Boersma, W., Castella, J.-C., Clarke, K., de Nijs, T., Dietzel, C., Duan, Z., Fotsing, E., Goldstein, N., Kok, K., Koomen, E., Lippitt, C.D., McConnell, W., Mohd Sood, A., Pijanowski, B., Pithadia, S., Sweeney, S., Trung, T.N., Veldkamp, A.T., Verburg, P.H., 2008. Comparing input, output, and validation maps for several models of land change. *Ann. Reg. Sci.* 42 (1), 11–47.
- Sang, L., Zhang, C., Yang, J., Zhu, D., Yun, W., 2011. Simulation of land use spatial pattern of towns and villages based on CA-Markov model. *Math. Comput. Model.* 54 (3–4), 938–943.
- Sangermano, F., Toledano, J., Eastman, J.R., 2012. Land cover change in the Bolivian Amazon and its implications for REDD+ and endemic biodiversity. *Landsc. Ecol.* 27 (4), 571–584.
- Shirley, L.J., Battaglia, L.L., 2008. Projecting fine resolution land-cover dynamics for a rapidly changing terrestrial-aquatic transition in Terrebonne Basin, Louisiana, U.S.A. *J. Coast. Res.* 24 (6), 1545–1554.
- Sinha, P., Kumar, L., 2013. Markov land cover change modeling using pairs of time-series satellite images. *Photogramm. Eng. Remote Sens.* 79 (11), 1037–1051.
- Soares-Filho, B.S., Pennachin, C.L., Cerqueira, G., 2002. DINAMICA – a stochastic cellular automata model designed to simulate the landscape dynamics in an Amazonian colonization frontier. *Ecol. Model.* 154 (3), 217–235.
- Takada, T., Miyamoto, A., Hasegawa, S., 2010. Derivation of a yearly transition probability matrix for land-use dynamics and its applications. *Landsc. Ecol.* 25 (4), 561–572.
- Tong, S.T.Y., Sun, Y., Yang, Y.J., 2012. Generating a future land use change scenario with a modified population-coupled Markov cellular automata model. *J. Environ. Informatics* 19 (2), 108–119.
- Viana, H., Aranha, J., 2010. Assessing multi-temporal land cover changes in the Mata Nacional da Peneda Geres National Park (1995 and 2009), Portugal – a land change modeler approach for landscape spatial patterns modelling and structural evaluation. In: Pinto, M.A., Azevedo, J.C., Feliciano, M., Castro, J. (Eds.), *Forest Landscapes and Global Change-New Frontiers in Management, Conservation, and Restoration: Proceedings of the IUFRO Landscape Ecology Working Group International Conference, September 21–27, 2010*, vol. 437–442, p. 2010.
- Villa, N., Paegelow, M., Camacho, M.T., Cornez, L., Ferraty, F., Ferré, L., Sarda, P., 2007. Various approaches for predicting land cover in mountain areas. *Commun. Stat. Simul. Comput.* 36 (1), 73–86.
- Wang, J., Mountrakis, G., 2011. Developing a multi-network urbanization model: a case study of urban growth in Denver, Colorado. *Int. J. Geogr. Inf. Sci.* 25 (2), 229–253.
- XianBin, S., HongJu, L., YuFeng, L., JingFeng, H., 2009. CA-Markov model-based identification of impacts of land use on landscape pattern. *J. Ecol. Rural Environ.* 25 (1), 1–7, 31.